

When the Show Must Go On...



When your lesson begins with “technical difficulties”, the projector isn’t the only thing that loses focus. Educators the world round know that *keeping* a class engaged is a lot easier than trying to *re-engage* them when you’ve just spent five minutes trying to figure out a technical glitch with your audiovisual equipment.

Much of today’s cutting edge technology is fast out-pacing the average user’s ability to access it. The most sophisticated AV equipment in the world is useless if your teachers don’t know how to control it.

1UControl is the answer.

At Center Stage

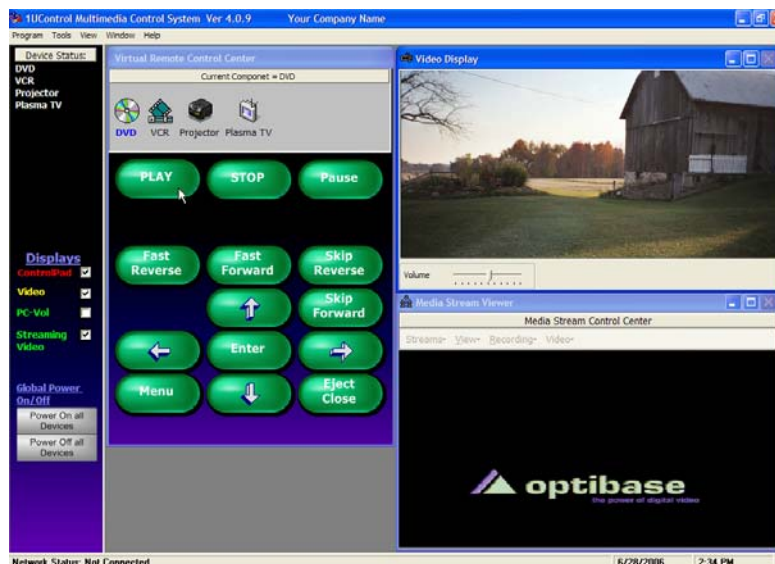
1UControl’s Virtual Remote Control Center allows the teacher to control all AV equipment – Plasma, LCD-TV, DVD/VCR, Projector, Document Camera, Sound System and more – in a classroom from a single, easy-to-use software application.

No more fumbling for multiple remotes, and hoping they have good batteries. No more frantically trying to figure out why there is sound but no picture.

Clear, consistent graphical displays relieve the stress of switching from one piece of AV equipment to another, and encourage dynamic, creative presentations that fully utilize all of your AV equipment.

Behind the Scenes

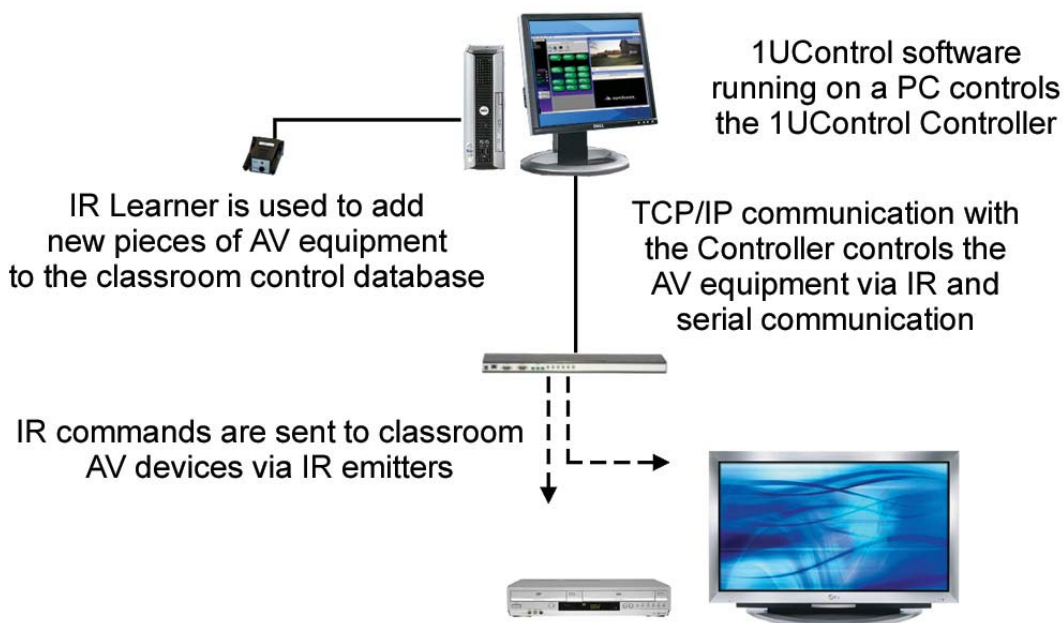
1UControl’s Administrative feature offers the ability to review information about the AV equipment in each connected classroom. An administrator can monitor equipment usage through a Device Usage report, or view the On/Off status of any serially connected devices. Adding AV devices to a classroom’s IR control database is a simple, straight-forward process, and an administrator can customize the button sets and appearance of the desktop display.



How It All Comes Together

The 1UControl software controls both IR and serial AV equipment through the use of the 1UControl Controller and an AV 4x1 switcher. The Controller can communicate with and control both RS-232 and IR driven equipment. 1UControl offers a variety of hardware and software options to customize the system to fit your needs.

The graphic below offers a simple overview of the basic components of the 1UControl system. Contact 1UControl for more information about the full range of possibilities to optimize the use of all the AV equipment in every classroom.



Additional Information

This graphic depicts the simplest 1UControl configuration. You can optionally add a network hub/router to communicate to a user network, video capture card to display video on the desktop PC, and a streaming solution from Optibase. Contact 1UControl for more information.

